

Management Minder – A web based Data Management Application (Technical Details)

A.S. Leaflet R3051

Dinesh Reddy Poddaturi, ISU Masters Student of Information Systems;
 Garland Dahlke, ISU Extension and Outreach Program Specialist;
 Sandy Johnson, Livestock Specialist, Kansas State University

all the content is database driven, which means any information can be manipulated/displayed according to the user needs. User interaction is the key in a Dynamic web application, the entire application is controlled by a secure web server, which makes it difficult to hack or change the information without authentication. Developers can add/change programming code very easily to include new functions in the application.

Summary

Software's like Java, MySQL, and Apache Tomcat can be used to develop a web application with high performance, less maintenance, low cost and low overhead/computing.

Materials and Methods

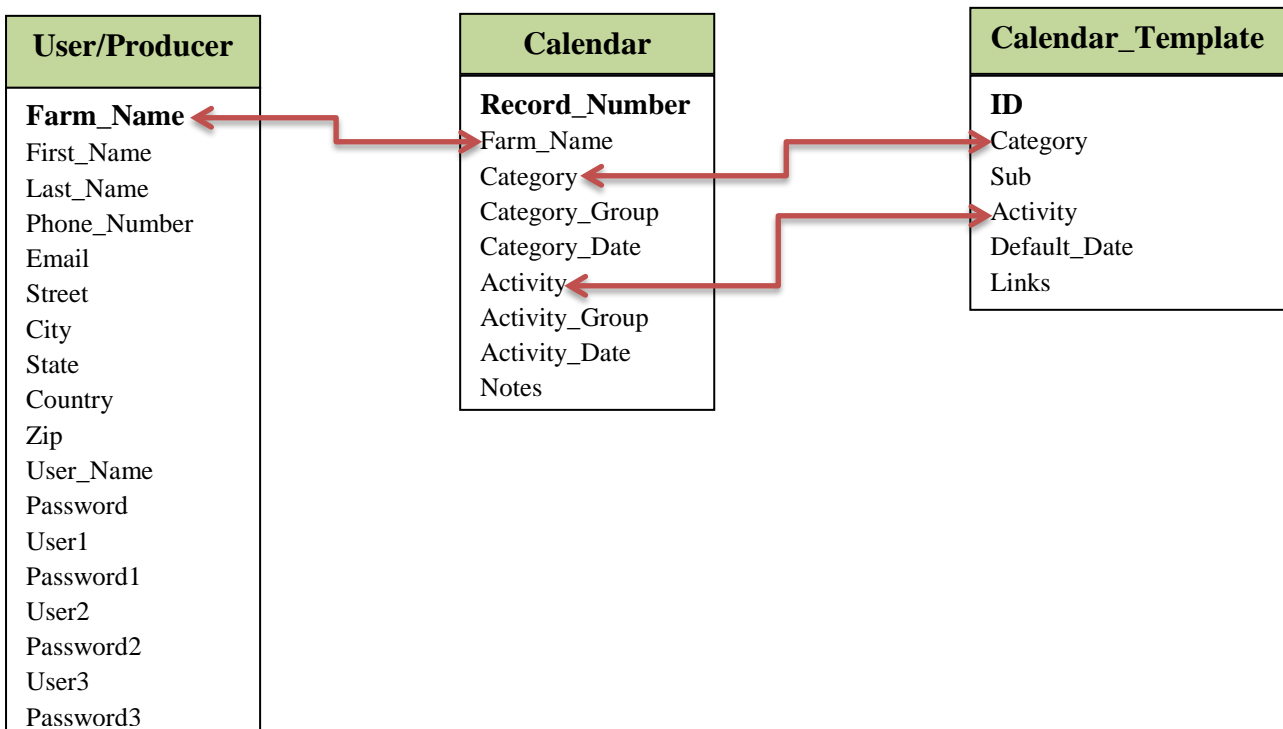
The application is programmed in Java (JSP, JSF). MYSQL database is used to save the beef producer's data, this database is dynamic (it changes whenever the producer inserts, deletes, updates data). We used Apache Tomcat webserver to host the application.

Introduction

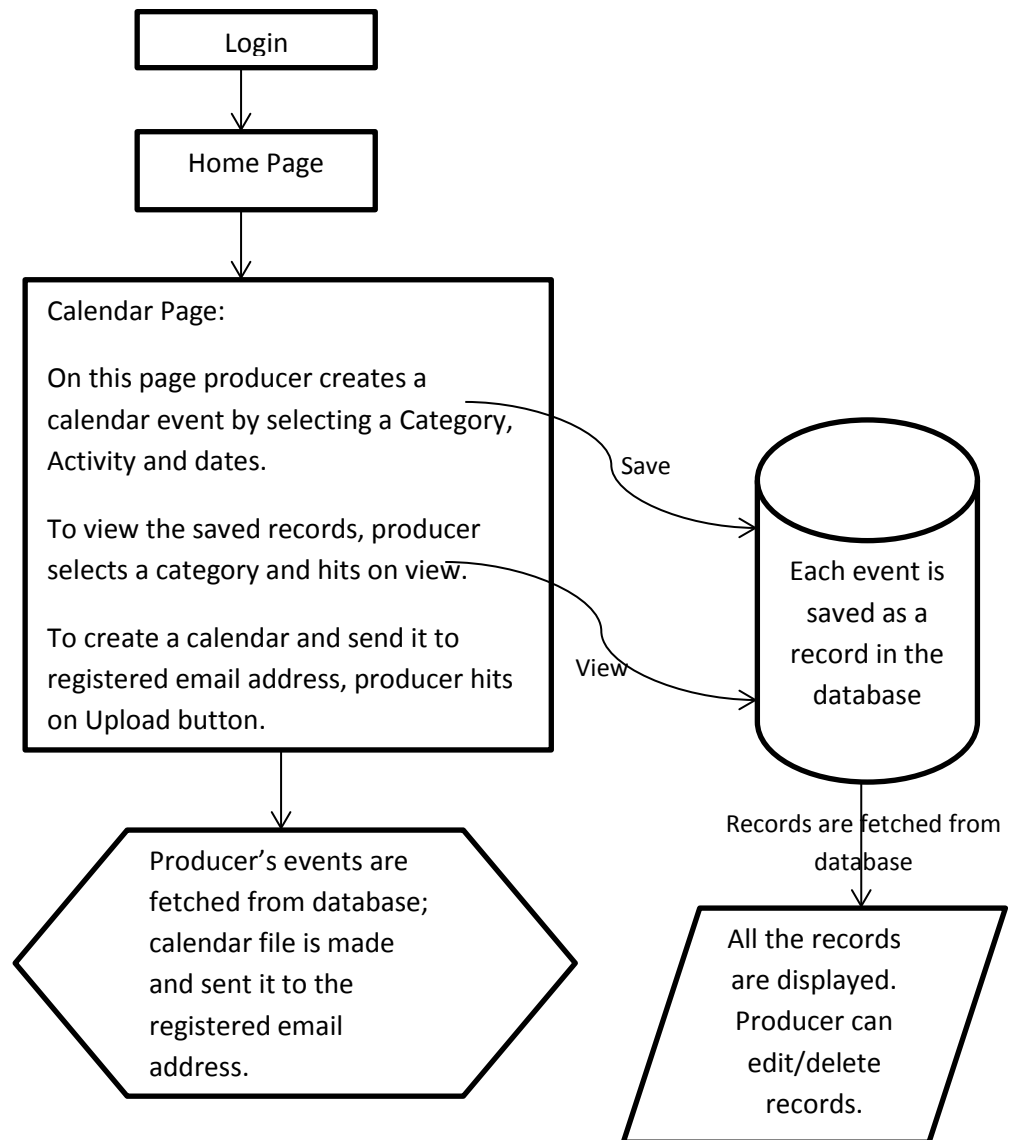
Java, MySQL, and Apache Tomcat are open source software's, these software's can be used to develop a dynamic web application. In a Dynamic web application



Database Structure:

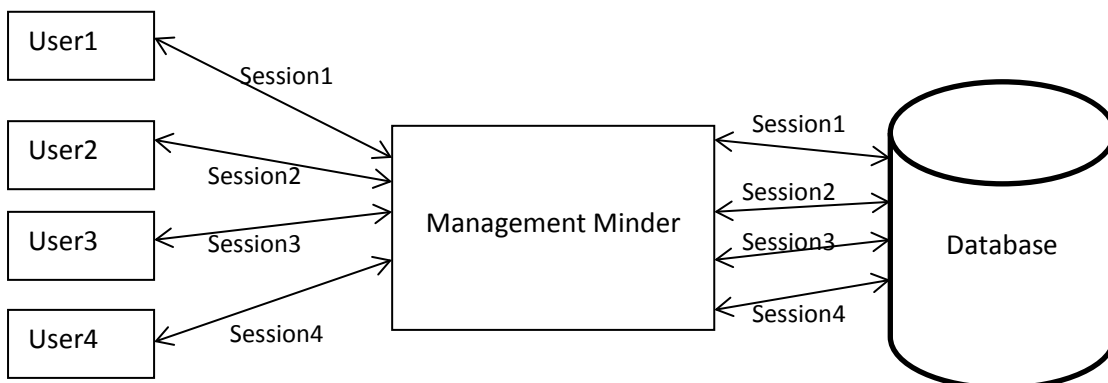


Navigation through the application:



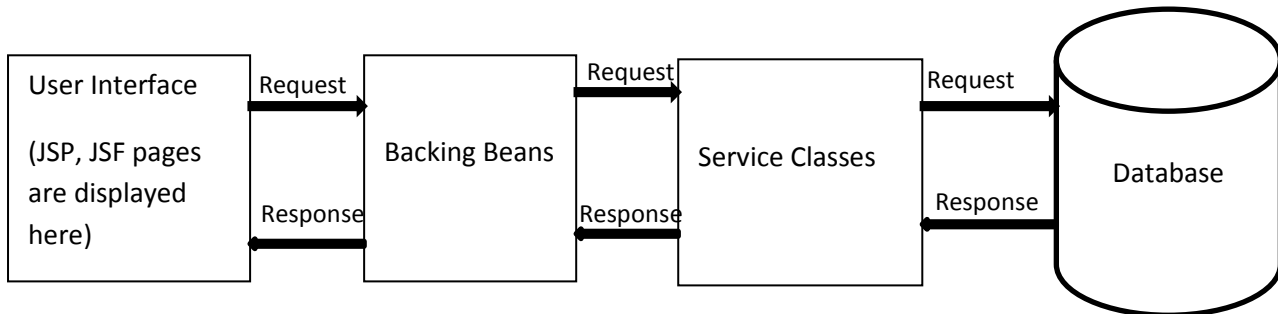
Each web page is designed in Java Server Pages (JSP), Java Server Faces (JSF) with Backing Beans to process the request from the User Interface (UI). The application is designed to be in Session Scope, which means each

object is created for each user when they log into the application. If there are 5 users using the application at same time, there will be 5 sessions. This helps to identify each user distinctively.



Backing beans listen to the request by user from UI; send that request to the service classes where all the business logic is executed. Service class communicates with

database to execute the request and sends back the response to backing bean and then to UI.



Results

The application is available on the internet, which means it can be accessed by anyone around the world. The application is always updated with new functionalities. The following link navigates to the web application <http://cowweb.exnet.iastate.edu/CowWeb/faces/>.

Acknowledgements

This project was made possible by monies provided by the Iowa Beef Center of Iowa State University and Kansas State University.