

2014

Northern Research Farm Summary

Northern Research and Demonstration Farm

Micah B. Smidt

Iowa State University, mbsmidt@iastate.edu

Follow this and additional works at: http://lib.dr.iastate.edu/farms_reports



Part of the [Agricultural Science Commons](#), and the [Agriculture Commons](#)

Recommended Citation

Northern Research and Demonstration Farm and Smidt, Micah B., "Northern Research Farm Summary" (2014). *Iowa State Research Farm Progress Reports*. 2053.

http://lib.dr.iastate.edu/farms_reports/2053

This report is brought to you for free and open access by Iowa State University Digital Repository. It has been accepted for inclusion in Iowa State Research Farm Progress Reports by an authorized administrator of Iowa State University Digital Repository. For more information, please contact digirep@iastate.edu.

Northern Research Farm Summary

Abstract

Contents: North Central Iowa Research Association; Farm and Weather Summary; Information on Experiments in Previous Annual Progress Reports; Research Farm Projects

Disciplines

Agricultural Science | Agriculture

Northern Research Farm Summary

RFR-A1395

North Central Iowa Research Association

Executive Board

President.....	Dennis Schwab
Vice President.....	Aaron Thompson
Secretary	Mervin Krauss
Treasurer	Paul Christians

Directors

Harley Kreitlow
Dennis Schwab
Mervin Krauss
Paul Christians
Ronald Christians
Cliff Howlett
Donald Latham
Aaron Thompson
George Guenther
Larry Draves

Iowa State University Staff

Research Farm Superintendent	Micah Smidt
Former Research Farm Superintendent	David Rueber (retired 11/1/13)
Research and Demonstration Farms Coordinator	Mark Honeyman 103 Curtiss Hall
Research and Demonstration Farms Manager	Tim Goode 103 Curtiss Hall
Ag Specialist	Matthew Schnabel (started 2/17/14)

Farm and Weather Summary

Micah Smidt, farm superintendent

Farm Comments

Field Days and Tours. Four field day events were held. A total of 219 people visited the farm in 2013. On November 1, David Rueber retired as superintendent after 36 years of service to Iowa State University. On December 1, Micah Smidt took over as superintendent.

New Projects. Nitrogen inhibitor applied to fertilizer, D. Barker; Cover crop mixes on corn and soybeans, E. Juchems; Ryegrass cover crop, NIRF; Fuel usage for different tillage practices, M. Hanna; Corn rootworm resistant events trial, NIRF.

Crop Season Comments

Corn planting got a late start because of heavy rain events in the spring. Planting started on May 13 and was completed on May 24. Harvest began October 17 and finished on October 28 with average yields of 170–180 bushels/acre. Grain moistures were higher than the average of the past three years.

Soybean planting started May 14 and was completed June 7. Harvest began October 3 and finished October 11 with average yields of 40–50 bushels/acre.

Yields varied greatly depending on soil water supply. Crops in areas with sandy subsoil died prematurely. There also were multiple areas drowned out that needed to be replanted because of the wet spring.

Weather Comments

Winter. At the start of 2013, the groundwater level was 14 ft. 9 in. below the soil surface due to the dry fall of 2012. Record snowfall of 9 in. fell on May 2.

Spring. The average temperature from March to May was cooler than average. The last hard spring frost was April 25 when the temperature fell to 26°F. We had the second wettest April in 64 years with 7.08 in. of precipitation (Figure 1).

Summer. A cooler-than-average temperature from May to July slowed the late-planted crops. After a wet spring, precipitation was below average from May to July (Table 1). There were five days in a row with temps over 90°F in July, but overall it was a cooler-than-average month. Most of the rain in June was on June 16 (1.02 in.). The largest rain event in July was 2.30 in. on July 26.

Fall. The first killing frost was October 13 when the temperature dropped to 28°F. By then most of the soybeans were mature and ready to harvest and most of the corn had black-layered. Fieldwork was completed by November 8. The frost layer was 1 in. below the soil surface on November 13. On December 18 the groundwater table was 9.3 ft below the soil surface.

Acknowledgements

Thanks to Calcium Products, Inc., Farm Credit Services of America, Farmers Trust and Savings Bank, Gold-Eagle Cooperative, DuPont Pioneer, MaxYield Cooperative, North Central Cooperative, and Bruce Smidt for support of work at the farm.

Table 1. Northern Research and Demonstration Farm, Kanawha, Iowa, monthly rainfall and average temperatures for 2013.

Month	Rainfall (in.)		Temperature (°F)		Days 90° or above
	2013	Deviation from normal	2013	Deviation from normal	
March	2.63	.75	25.9	-8.7	0
April	7.08	3.84	42.7	-5.4	0
May	1.74	-2.20	57.6	-2.5	1
June	4.72	-0.19	68.8	-0.6	1
July	2.37	-1.62	72.7	-0.3	10
August	2.58	-1.12	70.5	0	4
September	0.87	-2.17	65.6	3.1	2
October	<u>2.12</u>	<u>0.03</u>	49.2	-1.2	<u>0</u>
Totals	24.11	-2.68			18

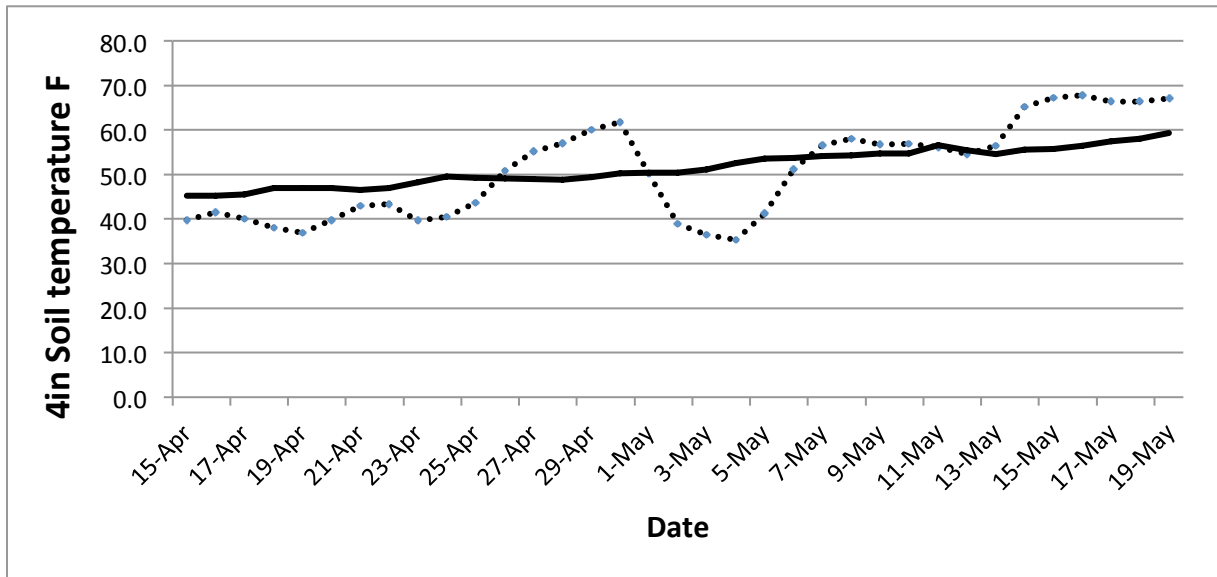


Figure 1. Spring 4-in. soil temperature °F at the ISU Northern Research Farm.

— 1982 to 2013 average.

..... 2013.

Information on Experiments in Previous Annual Progress Reports

	Year
ISU FARM Network: North Central RFR-A1262.....	12
Elite Soybean Test-North RFR-A12100.....	12
Alternative Grass Variety Trial 2010-2012 RFR-A12102.....	12
Corn and Soybean Response to Sulfur Application Rate RFR-A1261.....	12
Evaluation of Foliar Fungicides and Insecticides on Soybeans in Northern Iowa RFR-A1239	12
Use of Ground Eggshells as Liming Source RFR-A1290	12
Seasonal and Rotational Influences on Corn Nitrogen Requirements RFR-A1192.....	11
Placement Methods of Phosphorus and Potassium for Corn and Soybean Managed with No-till and Chisel-plow/Disk Tillage RFR-A1196.....	11
Water Infiltration following Land Rolling of Soybeans RFR-A1188	11
A Comparison of Soybean Seed Treatments RFR-A1189	11
Yield of Corn, Soybean, and Oats as Affected by Long-term Crop Rotation and Nitrogen Fertilization of Corn RFR-A10107.....	10
Timing of Land Rolling for Soybeans RFR-A1097	10
Pathotype Structure of <i>Phytophthora sojae</i> with Cultivar Rotation in Soybeans RFR-A1068	10
Effects of Soybean Cyst Nematode Infestation and Resistance on Fusarium Root Rot on Soybeans RFR-A1098	10
Comparing Yields of Soybean Varieties with Different Sources of SCN Resistance in Strip Trials RFR-A1066	10
Phosphorus Fertilization Strategies for Alfalfa Hay Production followed by Corn Harvested for Grain RFR-A9108.....	09
Long-term Tillage and Crop Rotation Effects on Yield and Soil Carbon RFR-A9110.....	09
Soybean Rust Reaches Iowa RFR-A9028	09

Research Farm Projects

Research Projects	Project Leader
Alternative grass variety trial	S. Barnhart
Annual ryegrass varieties	NIRF*
Beef manure on low testing P soils	A. Mallarino
Corn rootworm resistant events trial	NIRF*
Corn stand thinning	R. Elmore
Corn population	R. Elmore
Corn rootworm control	NIRF*
Cover crop mixes	E. Juchems
Crop residue and K release	A. Mallarino
Crop rotation and N rates	A. Mallarino
Demonstration shrub row	C. Haynes
Early application of fungicide on corn	A. Robertson
Foliar application of micronutrients on corn and soybeans	A. Mallarino
Fungicide and insecticide applications on soybean	D. Mueller
Home demonstration garden	C. Haynes
Long-term K fertilizer for corn and soybean	A. Mallarino
Long-term P fertilizer for corn and soybean	NIRF*
Long-term tillage and crop rotation	M. Al-Kaisi
Micronutrient foliar applied fertilizer for corn	A. Mallarino
Micronutrient starter fertilizer for corn	A. Mallarino
P fertilizer for corn-alfalfa rotation	A. Mallarino
Placement methods for K for corn and soybean	A. Mallarino
Placement methods for P for corn and soybean	A. Mallarino
Populus breeding	R. Hall
Post-applied urea	J. Sawyer
Red clover persistence trial	NIRF*
Seasonal and rotational influence on corn N requirements	J. Sawyer
Soil-applied sulfur on corn and soybean	J. Sawyer
Soybean disease resistance breeding	S. Cianzio
Soybean SDS breeding	S. Cianzio
Specialty soybean test	W. Fehr
Tractor fuel usage	M. Hanna
Tree biomass production	J. Randall
USA national phenology network	M. Schwartz
Use of ground eggshells as a liming source	J. Holmes
Weed identification garden	NIRF*

*Northern Iowa Research Farm