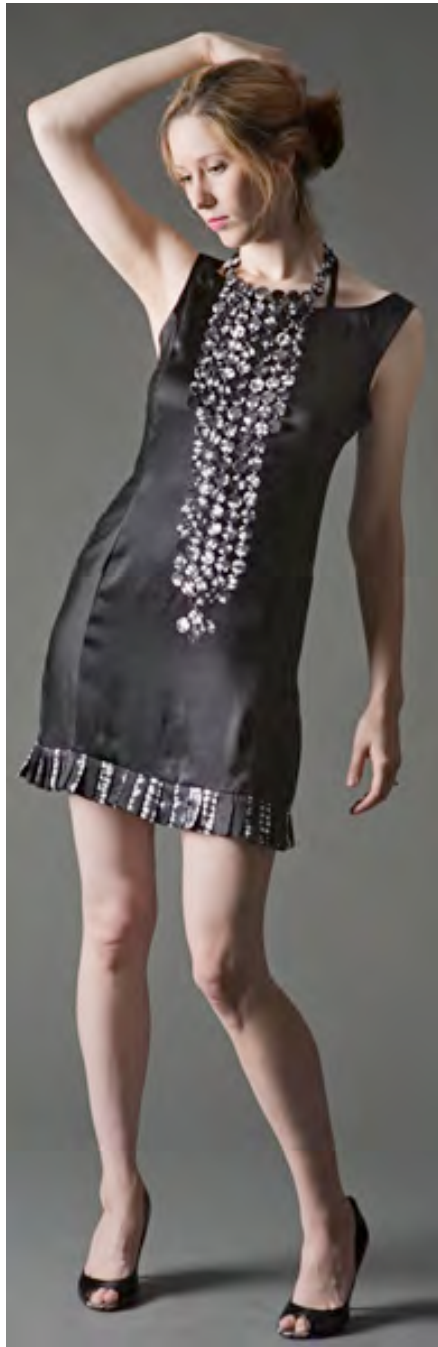


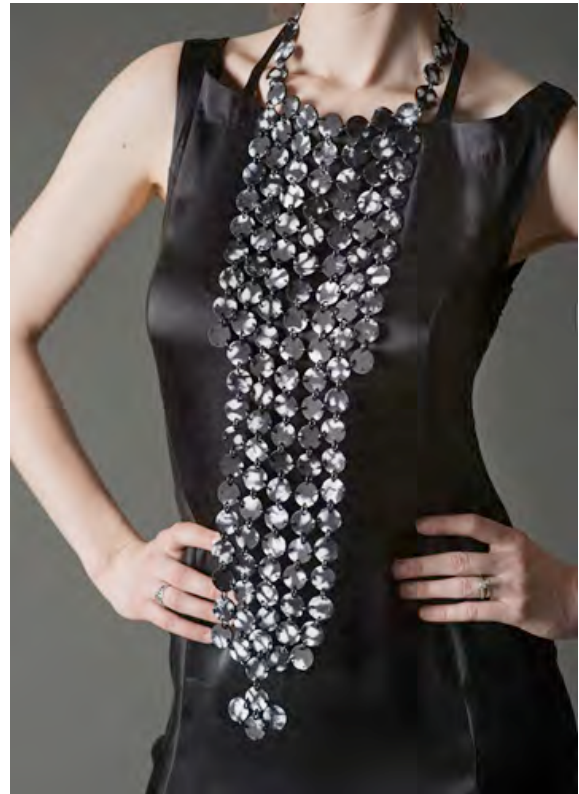


Jeweled Couture Dress-2
Kanupriya Pande, University Of North Texas, USA
Keywords: Shibori, Sustainability, Jewelry

With fast fashion taking control of the fashion staircase that's always demanding and ever changing I wanted to do something that was unique yet at the same time commercially viable. My idea of jeweled couture thrives on the concept of eveningwear dresses that come with induced jewelry that is vital component of the dress made out of same fabric as that of the dress. To start with I used charmeuse silk and dyed it in nocturnal color (black and its shades). I



then used the same silk with traditional Orinui shibori techniques to later use it in my extended jewelry component for my garment. I used circular discs of 0.75" diameter made out of cardboard and wrapped the shibori silk on them. With 2 discs pasted together I drilled holes in these circular forms. For assembling these circular pieces I used aluminum jump rings. Combining them together I made my extended garment component, which is an elongated choker necklace. I used the plain dyed fabric for making rest of my dress and shibori printed fabric for the neckpiece. The neckpiece that I made is can be worn both ways. One side has more visual texture while other is subtle. My knee length dress has pleats at bottom that are done in shibori print and an elastic at the back. It's a size 8 sleeveless eveningwear dress with a boat neck, simple yet classy. I finished this piece in April 2013.



Page 2 of 2