

Firefly

Megan West, Andrea Eklund

Central Washington University, Ellensburg WA

KEYWORD: Jacquard, Avant Garde, Gills,

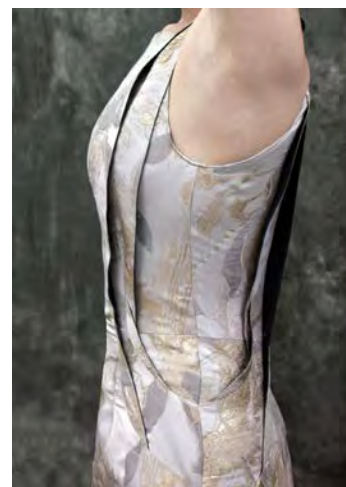


The purpose of this design was to portray an edgy professional style by using stiff fabrics to create protruding gills from multiple panels. This ensemble is inspired by the couture Avant Garde fashion style that captures the innovation of new concepts and techniques that can be described by using bulging shoulders, accentuated waistlines, three dimensional figures protruding from the garment and many other techniques that push the boundaries of everyday attire. I have taken this style and altered it to make these types of garments easily wearable and socially acceptable. The purpose of this outfit was to also expand my knowledge of working with a stiff fabric such as Jacquard while pairing it with interfacing to create three-dimensional figures within the garment.

Before the sketching process started, design-provoking images were collected and inspirational design elements gleaned. This ensemble was created with the Avant Garde style in mind. Since these types of pieces are usually off kilter and unrealistic, I chose to bring to life a melodious version of the style. In order to incorporate the Avant Garde style into the outfit I used a firm fabric and created gill-like panels that extend beyond the dress, which creates dimension and uniqueness to the silhouette of the garment.

While designing this arrangement, I needed to create it in a way that the panels would be fluent with each other so that the gills moved down the princess seam and were incorporated into the curve of the panels evenly. The draping method was used for the entire garment in order to ensure that all panels matched up. This dress was draped several times in order to fully understand and properly connect the dozens of bodice and skirt panels to each other. Many samples were made to ensure a proper fit and test of the size, shape and volume of the gill-like panels extending out from the dress.

When creating the final garment most edges on the jacquard were surged to create a finished edge, which made it easier to work with and manipulate throughout the curves in the garment. The gills were



lined with a dark blue plain weave fabric that complimented the blue hues in the jacquard fabric. The intention of this blue fabric was to create a peek-a-boo effect of a contrasting color that would occasionally show when the gills on the garment lifted. The gills were top stitched in place to create a small dark blue piping around the edges to create dimension of the gills from the dress so they wouldn't blend in.