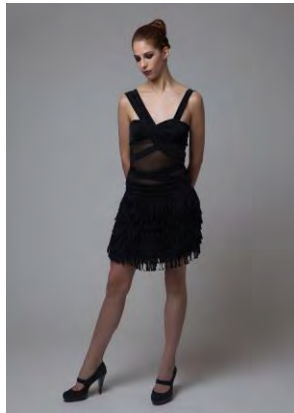


## Speakeasy

Sarah Wheeler, Marymount University, USA

Keywords: Textiles, Jazz, Fitzgerald, Design

I arrived at this particular design conclusion through a school project involving fabric manipulation and monochrome. After several trials with woven materials, I was strongly lead (by frustration as well as curiosity) to abandon that path and experiment with incorporating a spandex material. After several samples of different manipulations, I arrived at the fringe and the bands.



In designing this garment, I was inspired mostly by legends of the drunken antics of F. Scott Fitzgerald, and partially by his works, in particular *Tender is the Night* and *The Beautiful and the Damned*. The fringed elements and dropped waist of the dress reflect the fashions of the 1920's, while the bandage and sheer elements were incorporated to augment the design with a modern influence. The design is intended to evoke the celebratory atmosphere of the Jazz Age, while the color keeps in contact with the darker elements of society that hid in its shadows. This intentionally parallels the contrast between *The Beautiful and the Damned*, which was written in Fitzgerald's youth, and his last novel decades later, *Tender is the Night*, which chronicles the malaise that was brought on by his spiraling career, his turbulent home life, and the

fact that the negative circumstances of his life were all due to the things he had glorified in his youth.

The choice to use a cut fabric as fringe rather than to purchase a manufactured trim arose from the requirements of the project, as did the hand-made bands on the bodice. The black spandex was selected for its stretch qualities, as well as its feel. The polyester chiffon was chosen for the same reason – it was able to achieve more stretch than the silk chiffon while retaining structural integrity. Materials also include an exposed metal zipper, as well as weights for the hem.



A mix of flat patternmaking and draping was used to create this design. The sheer bodice and skirt were cut on the bias and machine sewn. The bands were made from machine-sewn tubes of spandex material, pin-basted, then hand sewn onto the garment. The fringe was cut from the same fabric using a rotary blade, and the edges were left raw. It was hand-basted then machine-stitched onto the skirt.