



Session #102

Fires, Pandemics, and Silenced Voices in Archival Collections: Processing,
Access, and Outreach in Times of Disaster

MOVING ARCHIVES FORWARD

Midwest Archives Conference annual meeting

May 5-7, 2022

Madison, Wisconsin

Introductions

Veronica Denison - Kansas State University Archivist - vldenison@ksu.edu

Sara K. Kearns - Kansas State University Academic Services Librarian - skearns@ksu.edu

Ryan Leimkuehler - Kansas State University Records Manager - rleimkue@ksu.edu

Mawi Sonna - Kansas State University Archives Student Employee

Benn Joseph - Northwestern University

Lina Rosenberg Foley - Wisconsin Department of Health Services Records Officer

Lori Curtis - Hillsdale College



Kansas State University Land Acknowledgement

As the first land-grant institution established under the 1862 Morrill Act, we acknowledge that the state of Kansas is historically home to many Native nations, including the Kaw, Osage, and Pawnee, among others. Furthermore, Kansas is the current home to four federally recognized Native nations: The Prairie Band Potawatomie, the Kickapoo Tribe of Kansas, the Iowa Tribe of Kansas and Nebraska, and Sac and Fox Nation of Missouri in Kansas and Nebraska.

Fires Happen











Fire, Pandemic, and Memory

Today's Special Collections Department: half of the department never experienced the library pre-fire

- institutional memory was lost
 - curators of collections left before replacements were hired
 - new processing archivist planning to reload all collections without seeing or knowing the space to return to
 - No consistent tracking of statistics on what collections were used in specific classes or lessons
 - Lost or abandoned resources like wiki, staffnet, websites, shared drive
 - *Reference Mawi video for more*



Outreach: Archives and Records Management

- Active vs. Passive Records Management
 - Records Management Training Program
 - Fire forced us out of our building and into the campus community
 - Built on connections that formed because of fire recovery work
 - Central IT
 - Faculty Connections
- Cat Communities
 - K-State History and Heritage: Who Are We, and How Do We Know?” (Kansas State University, Fall 2020)
 - Hands on History (Kansas State University, Fall 2022)

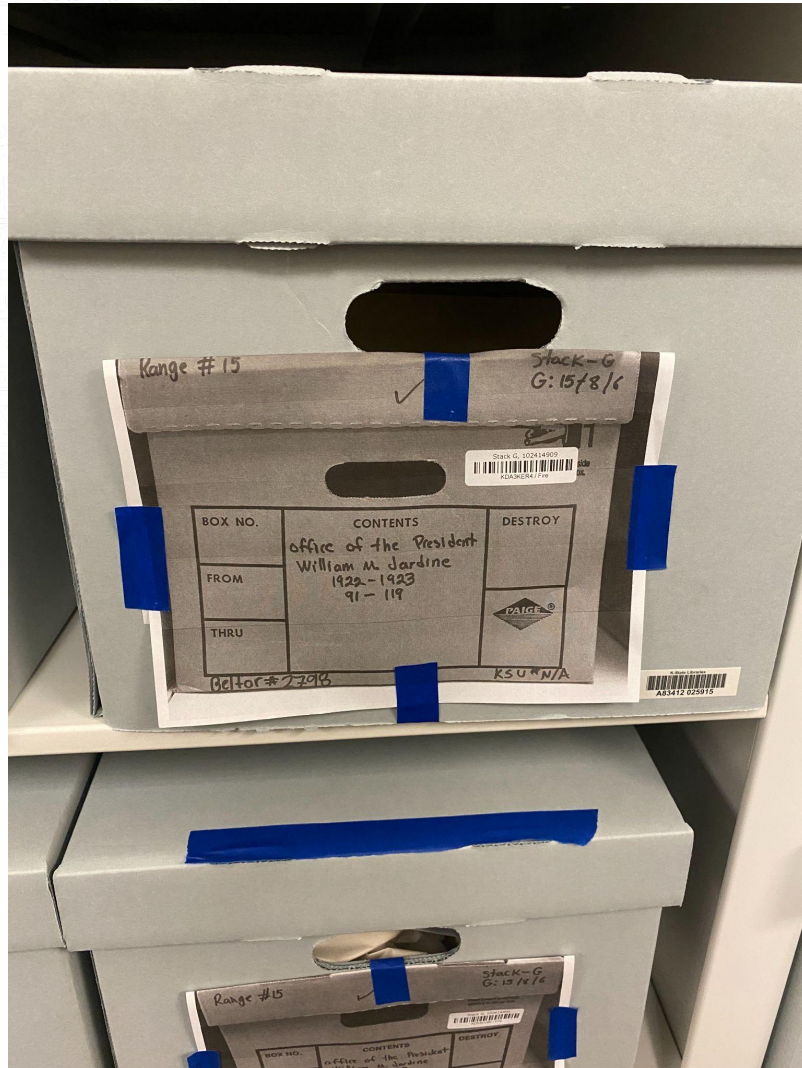
Outreach: Donors, Student Organizations, and More

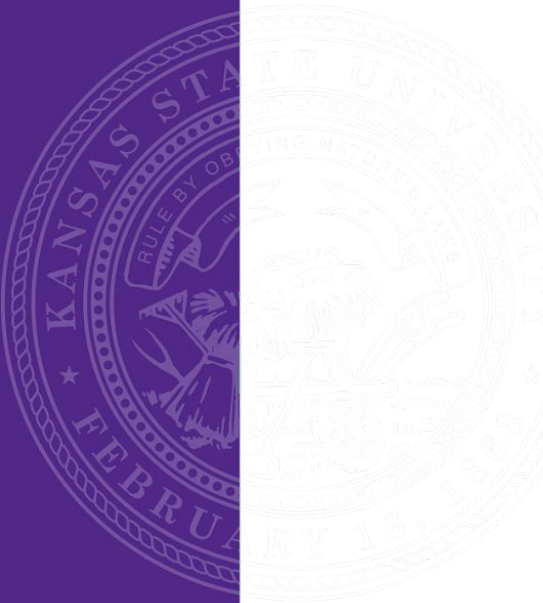
- Work with Student Organizations:
 - Hispanic American Leadership Organization (HALO)
 - Student Governing Association (SGA)
 - Black Student Union (BSU)
- Post Fire/Return to Campus
 - More engagement in local/regional conferences: LGBTQ+ Leadership Conference, set up oral history station and presented at conference

Outreach: Academic Services Librarians and Special Collections Joint Workshop

- Historic challenges to our collection usage outside our department
- While we don't have a building we still have collections
 - Still offered challenges
- Workshop #1: (2019)
 - What do we collect, How to use it, collaboration building
 - Results: more collaboration and requests for class support
- Workshop #2: (2020)
 - Case study and walk through with a course and collections from previous semester
 - Results: more collaboration outside of Humanities, more trust built between departments
- Workshop #3: (2022)
 - In development highlighting unique collections and collaboration with more unique collections: Architecture and Interior Design

Move-in to Hale



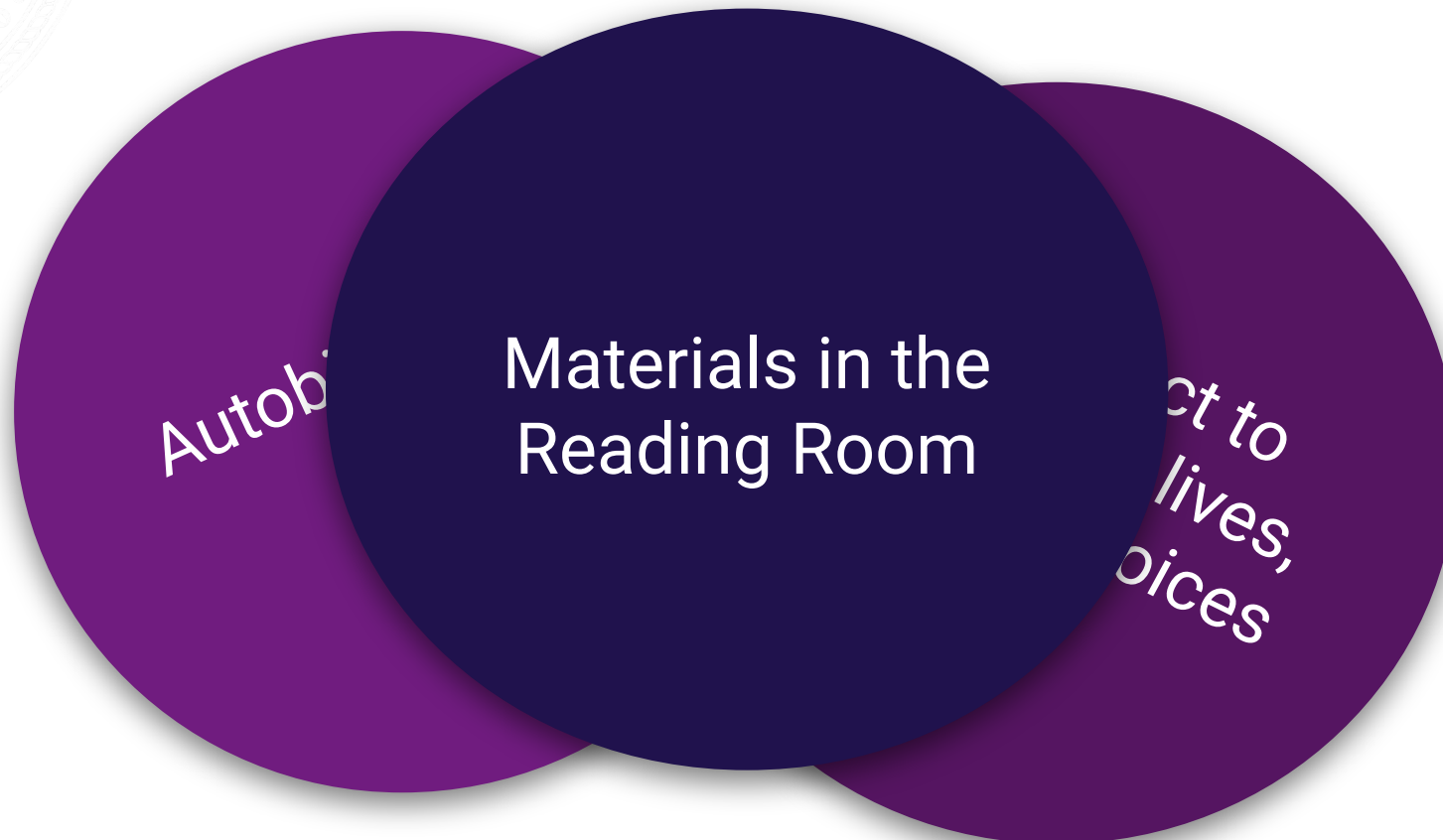


Student Perspective: Mawi Sonna



Teaching archives in the absence of the Archives

Spring 2020 Course: Autobiography to Instagram



March 2020

From K-State University Archives collections → primary sources from anywhere, so long as they are digitized

Libraries and Archives Mash-Up

- K-State University Archives -- digitized
- Kansas Historical Society Archives -- digitized
- Websites: university, newspapers
- K-State Libraries ebooks
- Internet Archive



Class Preparation

- Created ppt about archives, detailed instructions
- Compiled a master sheet for three case studies including: biographical/autobiographical text, links/copies of archival documents
- Created a worksheet with prompts and questions to answer
- Established an 80-minute deadline to complete as much of worksheet as they could (mimicking time they would have had in person)
- Created/posted/responded to discussion board questions

Example: Frank Marshall Davis

Attended Kansas State University in the 1920s

Journalist and newspaper editor

Sources:

1. Autobiography

Davis, Frank Marshall, and John Edgar Tidwell. *Livin' the Blues Memoirs of a Black Journalist and Poet*. Madison, Wis.: U of Wisconsin, 1992. Web.

2. *Royal Purple*. Student Publications, Inc., Kansas State University, 1926. Internet Archive, <http://archive.org/details/royalpurple1926unse>.

3. Frank Marshall Davis FBI file. Federal Bureau of Investigation. Internet Archive. <https://archive.org/details/FrankMarshallDavisFBIFile>

Davis, Kansas State, and Phi Beta Sigma

13

Manhattan, Kansas, smaller in 1924 than Arkansas City, was a pretty, little, tree-filled town existing primarily as an appendage to Kansas State. If you studied farming or veterinary medicine, you called it properly Kansas State Agricultural College; if you were in other courses, you called it Kansas State. Rival schools sneeringly termed it a “cow college” and headline writers abbreviated it to K-Aggies. Later it became Kansas State University.

Black students usually numbered twenty to thirty; Kansas University at Lawrence generally had five times that number. Virtually all the males lived at Phi Beta Sigma Fraternity house, an old three-story frame building supposedly being purchased on monthly installments. A few years later the original owner foreclosed and took back the structure. Seems the intermediary who received the payments, a soul sister, had pocketed the cash.

Living at Sigma house was practical experience in communal existence. A housemother visited us twice a year, but it was run by college boys with no outside help. We slept two to four to a room in bunk beds

Davis first composes poetry

I wrote my first poetry in my freshman year. In an English literature class, taught by Miss Ada Rice, for one assignment we had the choice of writing an essay or an original poem. I had no special interest in verse, but quite by chance in the college library I picked up a magazine containing several pages of experimental poems. I became so excited I immediately composed a short piece and turned it in. At the following session Miss Rice asked me to remain after class.

“It’s about that poem you gave me,” she said. “Do you have anything else?”

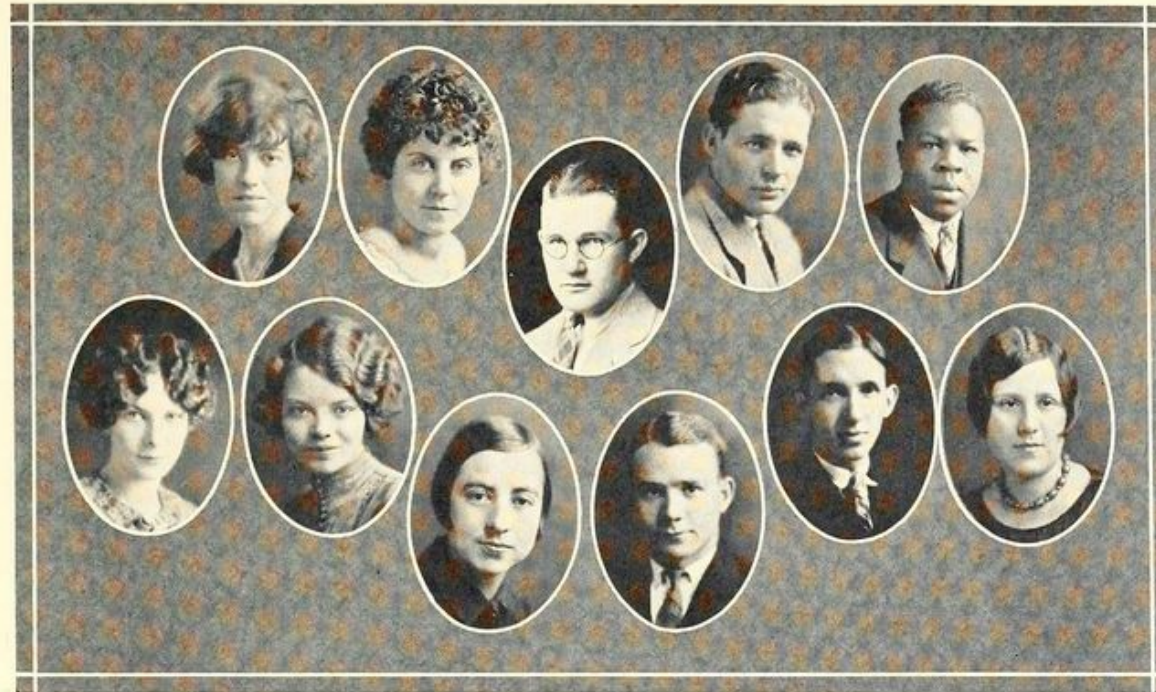
“Why?” I asked in surprise.

“I think you have talent. But I could make a more positive evaluation if I saw more of your work.”

Triggered by her interest, I dashed off two more and handed them in next class. These were followed by others. After receiving at least a

Davis appears in the Royal Purple yearbook

American College Quill Club



Top row—CLAMMER, CLARK, COMBS, CROSS, DAVIS
Second row—HAYDEN, KIMBALL, NICHOLS, PFUETZE, THACKREY, WATERS

Davis' FBI file: communists infiltrating Poetry Society of Kansas

FEDERAL BUREAU OF INVESTIGATION

Form No. 1

THIS CASE ORIGINATED AT **KANSAS CITY**

FILE NO. **100-8482**

REPORT MADE AT KANSAS CITY	DATE WHEN MADE 6-13-49	PERIOD FOR WHICH MADE 5-23, 25, 26, 31; 6-1, 3-49	REPORT MADE BY MAX E. RICHARDSON inf
TITLE POETRY SOCIETY OF KANSAS			CHARACTER OF CASE SECURITY MATTER - C

SYNOPSIS OF FACTS:

Informants Wichita, Kans. advise they believe efforts are being made to elect Communists and Communist sympathizers into membership of PSK. Also report efforts made by [redacted] [redacted] Houston, Tex., through [redacted] of the Univ. of Kans., to have Negro FRANK MARSHALL DAVIS, alleged Communist, elected to membership defeated, although majority of persons present voted in favor of membership. Membership list obtained.

b6
b7C

Discussion Board

Frank Marshall Davis: How does the ability to verify the existence of people mentioned in the autobiography affect how you read the text? What might that mean for you as someone who could appear in a classmate's autobiography or another autobiographical work?

For anyone: When do memories remain private? When are they public?



Thank You

Questions or follow up please feel to reach out to us at our contact information above.

Is Close Enough Good Enough?

Benn Joseph
Midwest Archives Conference
Madison, WI
May 5, 2022



Oak Grove Library Center, Waukegan, IL



KC Green



MARCH 2020

Sunday	Monday	Tuesday	Wednesday	Thursday	Friday	Saturday
1	2	3	4	5	6	7
8	9	10	11	12	13	14
15	16	17	18	19	20	21
22	23	24	25	26	27	28
29	30	31	1	2	3	4

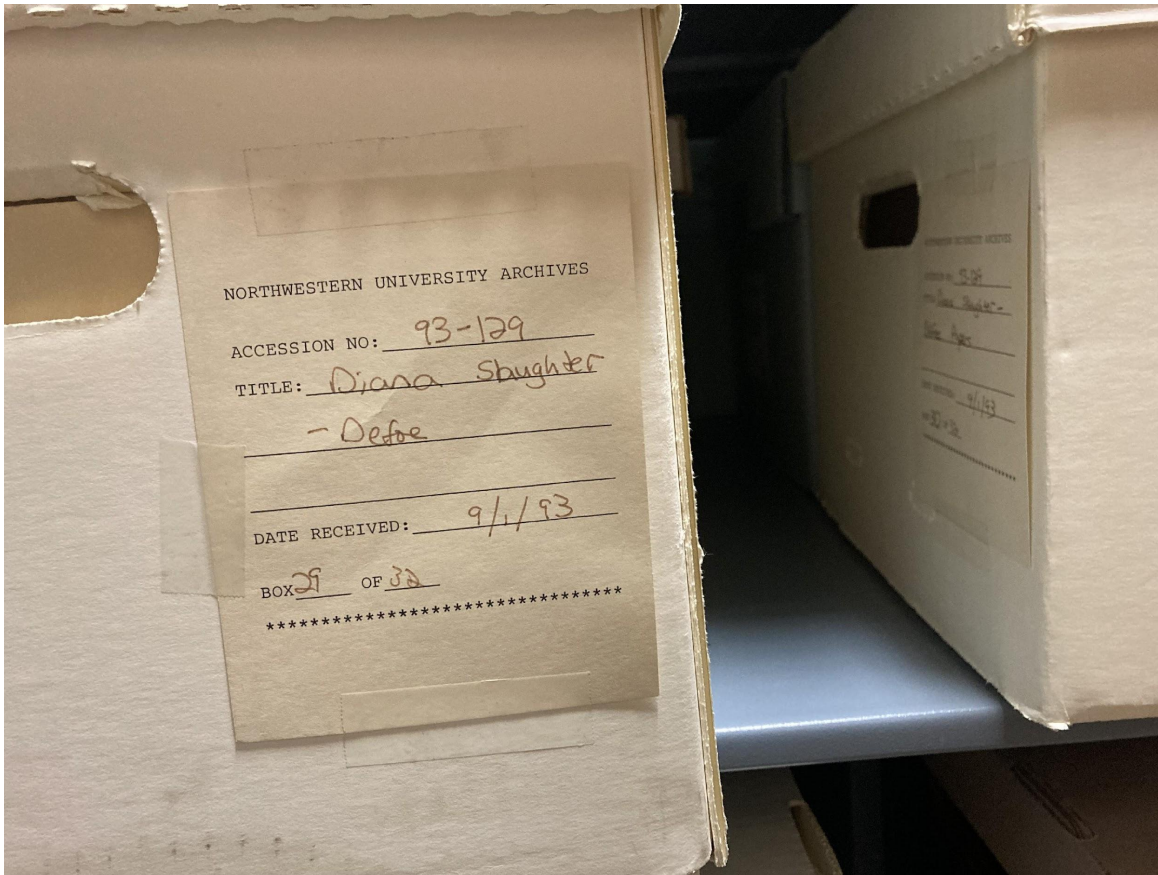
NULSA calendar, 2020



NUL virtual research consultation space



- Generate collection level records as we go
- Focus on collections that fit in with our DEIA strategy so we can focus on those and provide better description



Diana Slaughter-Defoe, #93-129

THANKS!

Benn Joseph
Midwest Archives Conference
Madison, WI
May 5, 2022



LAWRENCE
UNIVERSITY
APPLETON, WISCONSIN

Lawrence University Archives



Lawrence University Archives

Within the Seeley G. Mudd Library

Responsible for both records management and history of
Lawrence University and Milwaukee-Downer College

Staff of 1 FTE + 10 hours student labor/week

Collections are minimally processed and finding aids are
available online

Basic finding aids available online

Most collection records
contain basic information
and simple scope note.

Academy of Music Records

 **Collection – Multiple Containers** Identifier: LU-RG11-004

Lawrence University Archives | Academy of Music Records

[Collection Overview](#) [Collection Organization](#) [Container Inventory](#)

This collection consists of records created by the Academy of Music (previously known as the Lawrence University Music Preparatory Program and the Arts Academy) dating from 1979 to the present. Records include photographs, programs, catalogs, newsletters, and newspaper clippings.

Dates

1979-2020

Creator

- Lawrence University (Organization)

Conditions Governing Access

Collection is open for research.

Conditions Governing Use

Property rights and copyright reside with Lawrence University. For uses beyond those allowed for fair use under U. S. Copyright Law (Title 17, U.S.C.), please contact the University Archivist.

Extent

0.60 Linear Feet (2 boxes)

4.8 Megabytes

[Volume 55, Number 21, March 10, 1938](#)

[Lawrence University](#)

Document Type

Newspaper

Publication Date

3-10-1938

Recommended Citation

Lawrence University, "Volume 55, Number 21, March 10, 1938" (1938). *The Lawrentian*. 1289. <https://lux.lawrence.edu/lawrentian/1289>



ADD TO GROUP ▾ DOWNLOAD ▾

CITE THIS ITEM PRINT PREVIEW

<https://library.artstor.org/public/2454...> COPY

Item Details

PUBLIC

Title
Women with the Rock

Work Type
Still Image

Date
circa 1911-1915

Description
Frances Hogg standing on top

Repository
Lawrence University Archives

Subject
[Student life](#)
[Women college students](#)
[The Rock](#)

Collection
[Lawrence University Archives](#)



Digitized collections



Assumptions of the collection

Every collection had been minimally processed

Every collection had a finding aid

Collections processed beyond MPLP were clearly identifiable

Working with MPLP collections

1. Photograph the box
2. Catalog folder level inventory
3. Scan lo-res of folders as needed
4. Catalog as digital objects in finding aid
5. Create digital folder structure that mimics box contents



OCP_CommitteOnForeignStudies_1966-1976.pdf

 **Digital Record** Identifier: DF_LU-RG04-040_CommitteeOnForeignStudies

Lawrence University Archives | OCP_CommitteOnForeignStudies_1966-1976.pdf

Conditions Governing Access

Please contact the Lawrence University Archives for access to this digitized material.

Extent

1 digital files : Digitized on 7/31/2020 at 150dpi with no exclusions.

Expand All

Linked Records

Repository Details

Results

MPLP digitization process continues in person
Adjusted for students working on site and expanded
even further

Digital “boxes” have continued for courses

Takeaways

Provided additional understanding of the collection

Lowered the impact of research requests on staff time

Student projects can be adapted to remote work without needing a “digital” project

Surfaced gaps in collections access

Increased use of collections in courses



sgmudd

Lina Rosenberg Foley



Records and Information Assets Specialist, Records Officer
Digital Communications Team, Office of the Secretary
Wisconsin Department of Health Services

Lina.rosenbergfoley@dhs.wisconsin.gov