



Digitization for Engagement in the Pandemic and Beyond

#s603

University of Northern Iowa

- Founded in 1876 as the Iowa State Normal School
- 9200 students; 4 colleges; 90+ majors
- Special Collections & University Archives (SC&UA) at Rod Library
 - Manuscripts
 - University Archives
 - Rare Books
 - American Fiction
 - Wadle Paperback Collection
 - Stageberg Linguistic Collection
 - Small Press Collection
- Mix of students, faculty/staff, and outside patrons/users



Collection Highlights

- Features SC&UA collections
- Started as a COVID project
- Largely student-produced
- Pros:
 - Behind-the-Scenes
 - Student engagement
 - Digital content
- Challenges:
 - Display / Digital access
 - Balance with other projects

Special Collections & University Archives

[Rod Library Home](#) | [★ Special Collections -](#) | [University Archives -](#) |
[University Archives Finding Aids](#) | [About Us -](#) | [Manuscript Collection](#) | [IndexUNI](#) | [Highlights](#) |
[Planning Your Visit](#) | [Web Archiving](#) |

[Home](#) / [Highlights](#)

Highlights

The staff and students who work in Special Collections & University Archives are excited to share some of the amazing materials and resources available in this part of Rod Library. We will add content here periodically. Stop back to see more!

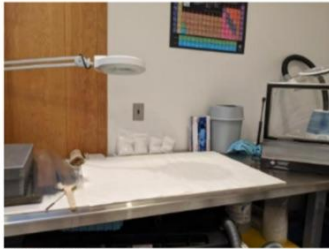
- ["Landmarks in Iowa History" Now Online](#)
- [Football Films](#)
- [Susan B. Anthony Letter](#)
- [Erma Plaehn](#)
- [Funeral for Academics Tombstones](#)
- [Online Old Gold Yearbooks](#)
- [The Rose of Treason](#)
- [Grossman Manuscripts](#)
- [May Day](#)
- [COVID-19 Community Archiving Project](#)
- [Putting Names to Faces: Humanizing the Archival Experience](#)
- [Grace Myers Elliott papers](#)
- [UNI 7](#)
- [Baseball](#)
- [UNI Student Organizations](#)
- [Mold Removal within SC&UA](#)
- [Pick Photos for Primary Source Research](#)
- [More Football Films Now Digitized and Online](#)
- [Storing and Caring for Materials](#)
- [The Malcolm Price Laboratory School Collection and Research](#)
- [Hearst Family Papers](#)
- [UNI Bulletins & Catalogs](#)
- [Glass Plate Slides](#)
- [Homer H. Seerley Papers](#)
- [Plays of the Past](#)
- [Women's Literary Societies](#)

Highlight: Mold Removal within SC&UA

View Edit Revisions

Working in **Special Collections & University Archives** means that oftentimes, I am responsible for handling very delicate, fragile antiquated materials. SC&UA strives to preserve and care for these items so that they may be enjoyed and used in future research. To make this possible, staff in SC&UA, such as myself, perform basic preservation work on the materials to help extend their usable life. Sometimes the materials acquired by SC&UA are in rough shape from the long life they have lived, such as having torn or missing pages, faded imagery and text, and traces of mold.

Something new that I have learned so far this semester, in my role as the SC&UA Collections Technician, is how to deal with mold. Whether mold is live or inactive, we try to address it to prevent further damage. If it is currently something that has active mold it needs to be moved away from all of the other archival materials to prevent it from spreading.



Culture Lab Room



Inactive Mold in Lucile Berman's GTC Scrapbook



Brushes with Culture Lab

If we find inactive mold, we try to effectively and safely remove it from the material. Inactive mold means that there are traces of mold that used to be alive, but now it's just a residue left over and is not an active threat to spreading across the collections. However because mold can go dormant but never really dies, it is important to remove inactive mold to prevent it from coming alive again in the right environmental conditions. To remove inactive mold, I spent time working in the Culture Lab, which is a reservable space within the UNI Museum in Rod Library. Nathan Arndt, the UNI Museum Assistant Director and Chief Curator, showed me how to use the different tools and equipment in the Cultural Lab.

To start, I selected a brush to gently remove the mold. The Cultural Lab has many different brushes of various sizes and softness, depending on the texture and durability of the object that you want to clean. These brushes look very similar to paint brushes, and they are used to gently

Homer H. Seerley Papers

View Edit Revisions



Clifton Seerley portrait, included in the Photograph Collection, Box 2, Folder 2, record series ACS, University Archives, Special Library, University of Northern Iowa.

The University of Northern Iowa (UNI) has had many presidents over the past 146 years. So far, the president who has held the title the longest has been Homer H. Seerley, the second president of UNI (previously known as the Iowa State Normal School / Iowa State Teachers College). Seerley served as president for forty years from 1886 to 1926 and was motivated by his strong passion for education. Due to the length of time he was president, he made impactful decisions that helped evolve UNI into what it is known for today.

As president, his incoming and outgoing correspondence and other materials, such as reports, have been collected as the **Homer H. Seerley Papers** in University Archives. The papers touch on a wide range of subjects from concerns of World War I to administrative functioning to the American Women Suffrage Association. With 146 boxes, this collection is split up into six different sections: Correspondence from H. H. Seerley, Official Correspondence Received by H.H.S. Board of Education, Copies of Correspondence, Addresses and Reports, and Newspaper Clipping Scrapbooks. Correspondence alone takes up 106 boxes in this collection! Due to the amount of this collection, as well as cataloging for these papers was created and indexed to the box-level, to better help with location and organization.

Recently I spent time rehousing the Seerley Papers to store the materials more effectively. I shifted the materials to fit closer together within the boxes to prevent damage such as folds, bends, and tears. This project was important since this collection is very old and has a mixture of loose leaf pages and bound books. While rehousing the Seerley Papers I couldn't help but notice the expense of the collection and the quality of the materials. I spent some time examining Seerley's handwriting and found that his cursive is quite uniform and ornate. However, it is quite evident when he was in a rush because his handwriting gets thicker, messier, and doesn't read. Either way, he somehow managed to write straight despite the paper being wavy! Only the first few boxes have Seerley's handwriting, the rest of the boxes are all typed, making this find even more special! The papers themselves are translucent and thin, like tissue paper, and are most likely mimeographed. Some of the ink has smudged and bled through the pages showing the age of the materials and the thinness of the paper. It greatly surprised me that these materials are in such good shape despite their age.



Note: Click on the image to see a high resolution pdf copy: Clifton Letter from Homer Seerley to Henry Seerley, Sept 22, 1886, in the Homer H. Seerley Papers, Box 2, record series #2022025 University Archives, Special Library, University of Northern Iowa.



Note: Click on the image to see a high resolution pdf copy: Clifton Letter from Homer Seerley to C. Jordan's Sons Publishing Company, Sept. 18, 1886, in the Homer H. Seerley Papers, Box 2, record series #2022025 University Archives, Special Library, University of Northern Iowa.

While examining Homer H. Seerley's collection, it really made me think about all the memories these papers held. Not only from Homer Seerley himself but from all the people he worked with over the years, and those who have examined and housed these materials. To have a greater understanding of the vastness of this collection, visit the **Homer Seerley Collection**, as well as a **travel journal** by his father, Thomas Seerley. There is also a **highlight about the Susan B. Anthony letter** that was found in this collection! Whether you are doing research on UNI's past presidents or want to look in and out of our materials, contact the SC&UA **faculty and staff** or **make an appointment** to visit SC&UA, located on the third floor of Rod Library!

Contributed by Library Student Assistant Kacie Currier, April 2022

Primary Source Sets LibGuide

- Way to provide online access to collections during COVID-19
- Collaboration with UNI Museum
- Inspired by other primary source sets at the Library of Congress, State Historical Society of Iowa, etc
- Topic-oriented
- Use beyond COVID

The screenshot shows the UNI University of Northern Iowa Rod Library website. The header is purple with the UNI logo and text. Below the header is a navigation bar with links for 'Rod Library', 'Research Guides', 'Primary Source Sets', and 'Elections and Campaigns'. The main content area is titled 'Primary Source Sets' and includes a search box. The page is divided into several sections: 'Elections and Campaigns' (highlighted in yellow), 'Additional Resources', and 'Primary Sources'. The 'Elections and Campaigns' section contains text about the importance of elections and a list of related materials. The 'Additional Resources' section lists activity ideas and FAQs. The 'Primary Sources' section features three items: a ribbon, a political button for Nixon-Agnew, and a political button for Humphrey.

UNI / University of Northern Iowa
Rod Library

Home | Research Guides | Primary Source Sets | Elections and Campaigns

Primary Source Sets

This guide contains primary sources from UNI Museum and Special Collections & University Archives at Rod Library. This guide is intended to provide information about using primary sources in the Piv-12 classroom for teachers and students alike.

Search this Guide Search

Elections and Campaigns

As a democracy, elections are the foundation of the government of the United States. This set focuses on election materials collected from campaigns at various levels of government.

Many items below come from various collections within Special Collections & University Archives. Finding aids to specific collections are linked below.

A curated sample of the UNI Museum materials related to elections can be found at the tag set linked below. More materials may be found by searching the online database available on our website.

- Mary T. O'Halloran Papers, MAC-85
- Leon Mosley Papers, MAC-04
- Lynn Culler Papers, MAC-42
- Charles E. Grassley Papers, MAC-30
- Black Hawk-Bremer League of Women Voters Records, MAC-11
- UNI Museum Election tag set
- UNI Museum Political History database

Additional Resources

- Activity ideas
Activity ideas for grades K-8 aligned with the Iowa Social Studies Standards.
- FAQs
A general overview of elections in the United States.
- Photographs Suffrage Pictorial Archive
Collection of historic postcards related to Women's Suffrage.

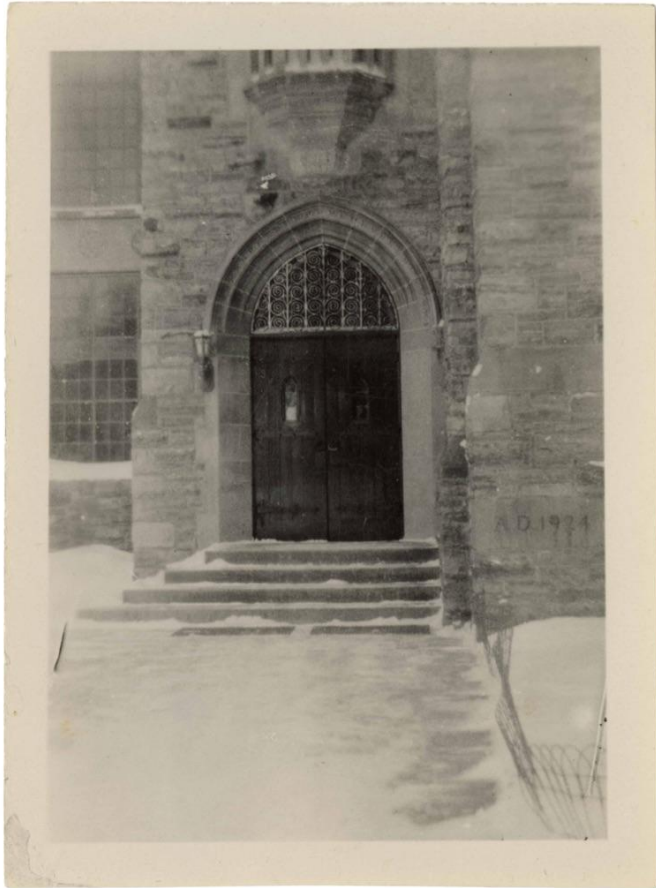
Primary Sources

Ribbon
Ribbon worn by a delegate at the 1902 Democratic State Convention. These conventions are used to select a presidential nominee. UNIM 00.34.2.6.2.

Political Button
Official campaign button for the Nixon-Agnew 1958 presidential campaign. UNIM 1958.12.

Political Button
Campaign button for Hubert Humphrey's 1958 presidential campaign. UNIM 1958.27.

Political Button
Pin in support of the Republican Party, which is also known as the GOP. GOP stands for "Grand Old Party." UNIM 1870.83.



Norwegian-American Historical Association

- Dedicated to locating, collecting, preserving, and interpreting the Norwegian-American experience
- Home to one of North America's oldest and largest ethnic manuscript collections
- Independent nonprofit housed in Rølvaag Memorial Library on the St. Olaf College campus
- Over 1,000 members from the United States, Canada, and Norway
- Robust scholarly publishing program, including journal Norwegian-American Studies published by the U of M press



Digitizing the papers of O.E. Rølvaag

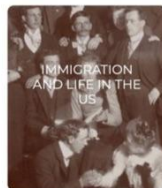
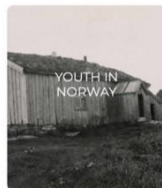


Outreach + Internships



Ole Edvart Rølvaag was a Norwegian-American professor, thinker, novelist, and figurehead. He left his home on the island of Dønna, Norway, in 1896, aged 20, to work in America for a number of years and return to Norway with the wealth he had accumulated. However, he discovered that the so-called "American dream" he had heard so much about from fellow Norwegian emigrants was not all that it was cracked up to be. After spending a few years on his uncle's farm doing hard labor, Rølvaag began to notice the great loss that these Norwegian-Americans had endured, spiritually and culturally.

EXPLORE OLE E. RØLVAAG'S LIFE



INSIDE *the* ARCHIVES



<https://naha.stolaf.edu/o-e-rolvaag-resource-guide/>





University of Nebraska at Kearney

- Founded in 1905 as Nebraska State Normal School at Kearney
- 4500 undergraduate and 1800 graduate students
- Strongly focused on education and education-related professions
- Special Collections & Archives @ Calvin T. Ryan Library
 - University Archives
 - History of Education
 - Central & Western Nebraska
 - Materials to support teaching, learning, & research



UNK

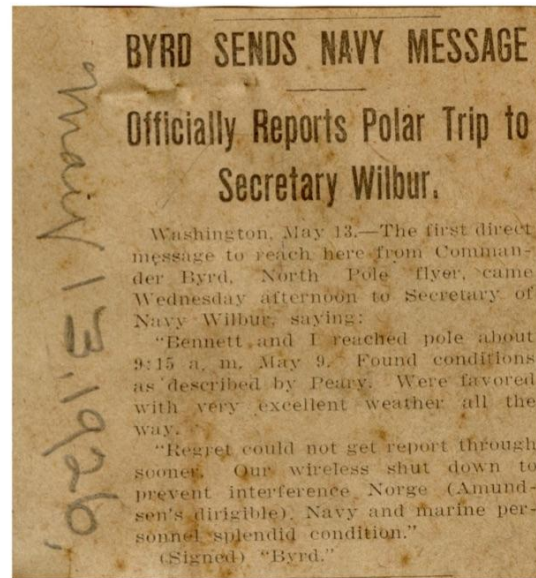
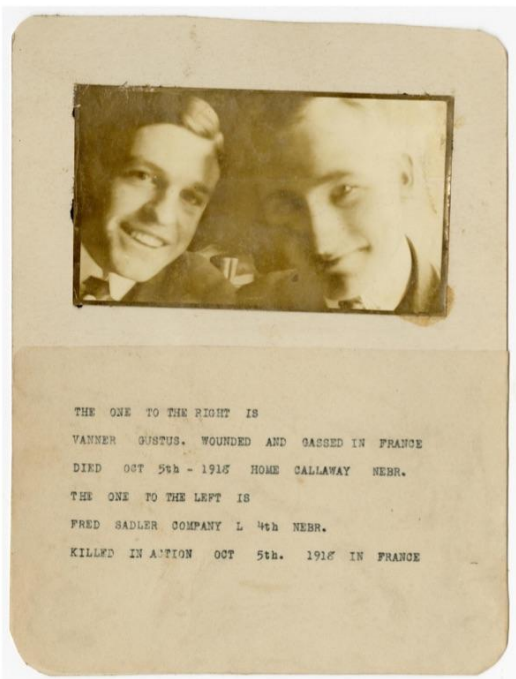
Digitizing the Country School Legacy Collection



<https://openspaces.unk.edu/countryschoollegacy/>



Memorial Cemetery Gates Time Capsule



<https://openspaces.unk.edu/dar-capsule/>

UNK



UNI

- scua.library.uni.edu
- guides.lib.uni.edu/primarysourcesets
- scua.library.uni.edu/highlights

NAHA

- naha.stolaf.edu/archives
- rolvaag.omeka.net
- <https://naha.stolaf.edu/o-e-rolvaag-resource-guide/>

UNK

- library.unk.edu/archives/
- openspaces.unk.edu/countryschoollegacy/
- openspaces.unk.edu/dar-capsule/