

017

**Interactive meat inspection:
Do we all decide in the same way?**

Langkabel N.¹, Dzierzon J.¹, Oswaldi V.¹,
Meemken D.¹

¹FU Berlin, Institute of Food Safety & Food Hygiene, Berlin,
Germany

In the EU, the visual post-mortem inspection is the standard procedure for pigs at the slaughterhouse. Nevertheless, the official veterinarian has to expand the post-mortem inspection procedures by using palpation or incision if one or more of the following indicates a possible risk to public or animal health or animal welfare:
checks and analysis of the food chain information following Reg. (EC) No. 853/2004
findings of ante-mortem inspection
results of the verifications concerning animal welfare rules
findings of post-mortem inspection
additional epidemiological data or other data from the holding of provenance of the animals
Visual findings in pigs and the value at the current food chain information as required in Reg. (EC) No. 853/2004 are critically discussed topics since several years. In the presentation, we will focus on post-mortem findings and a few cases that have to be evaluated visually, as it is done day by day in the slaughter line in the EU. In this context, we will be dealing with the question: “Do we all decide in the same way?”

The intention of these interactive case series is to initiate a professional exchange between the expert auditorium and to discuss possible decisions in the visual post mortem inspection.

Via an online voting platform, all conference participants can take part in an anonymous vote. The evaluation of the voting will be directly available as a basis for an in-depth discussion of the available choices.

You can actively take part in the discussion by using the online-voting tool “Invote”.

Please use your smartphone or tablet to participate in our interactive presentation using the following link:

<https://invote.de/62507>

or scan the QR-Code:



Below you can see an example case with a short description and a question to be answered. One of the three possible choices must be selected and submitted:

Afterwards we would like to discuss the voting results together.

Example results after an evaluation of the example case:

62507 <http://invote.de/62507> oder
SMS an 0177 178 45 36: „62507 C“

During visual inspection you examine the following carcass (picture 1 and 2). What is your decision regarding fitness for consumption?

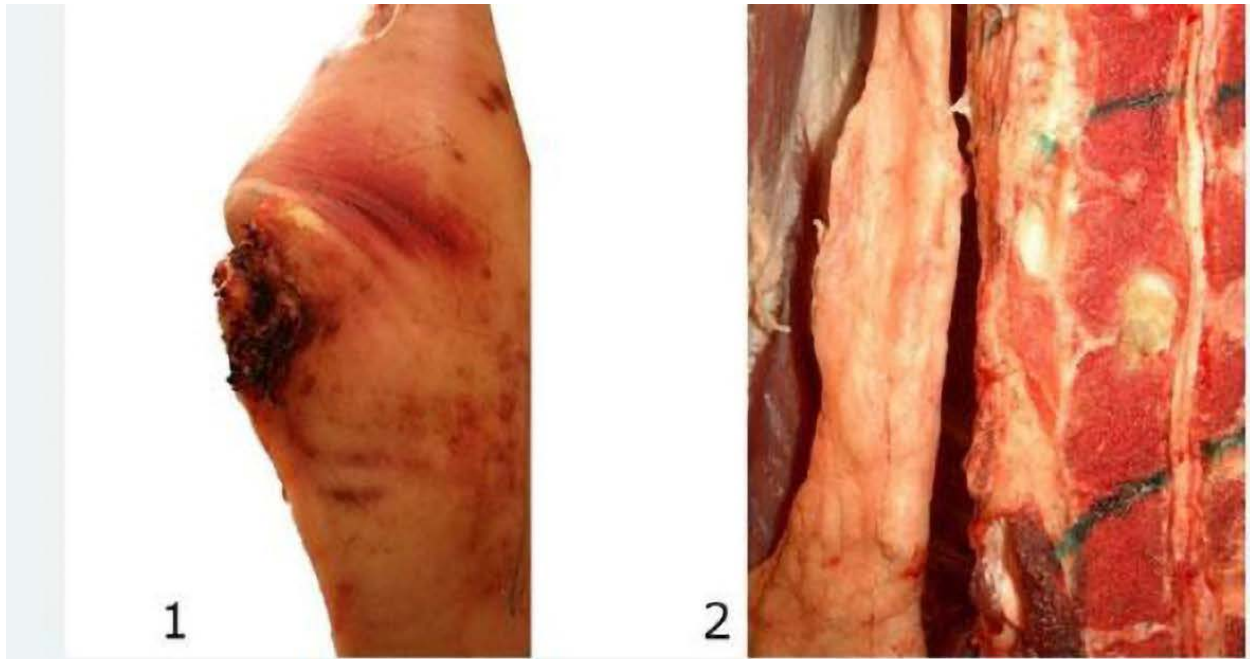
- A** the carcass is fit for consumption
- B** parts with lesion or abscess are unfit for consumption
- C** the carcass is unfit for consumption



1



2

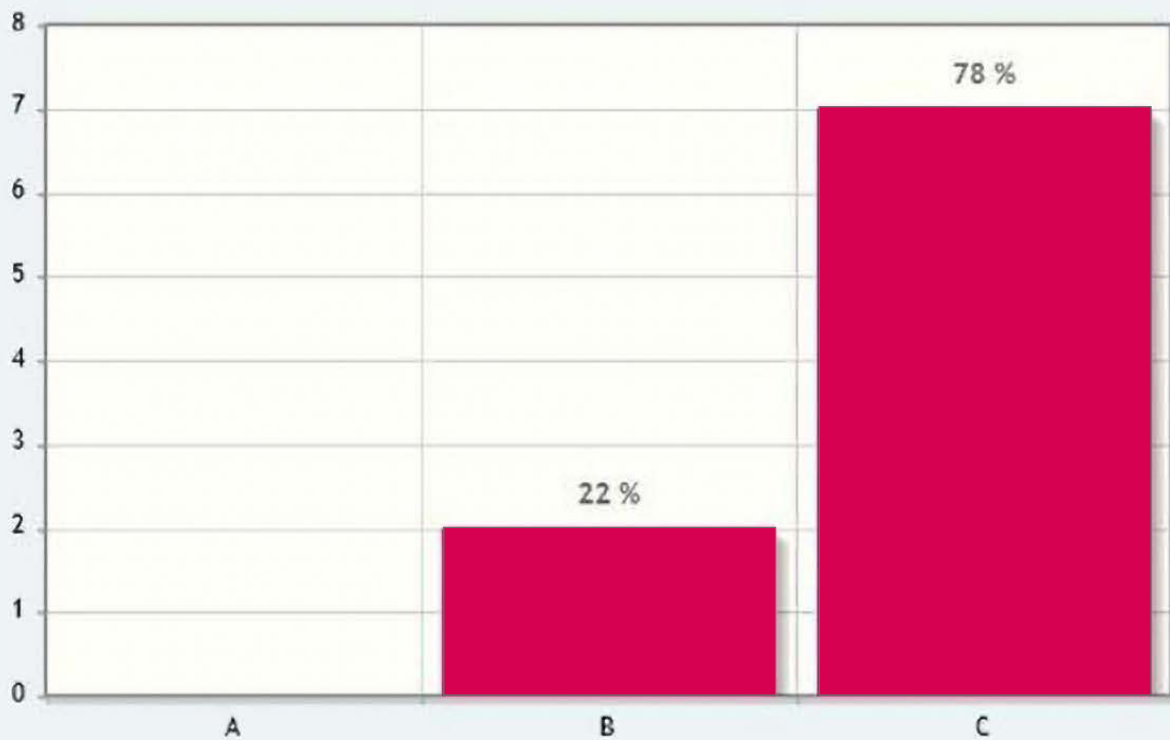


Histogramm

Textuell

Export

Teilen



- A the carcass is fit for consumption
- B parts with lesion or abscess are unfit for consumption
- C the carcass is unfit for consumption

N=9